

Bulletin #2

Český pohár, žebříček, WRE, INOV-8 CUP – žebříček A – sprint
Czech Cup, World Ranking Event, INOV-8 CUP – sprint

Organizer

Czech Orienteering Federation (ČSOS)
KOS TJ Tesla Brno

Event organizers

Event director: David Rajnoha
Course setter: Jakub Zimmerman

IOF Event Adviser

Jan Fiala (CZE): honzafiala0@gmail.com

Information

<http://www.tbm.cz/2023-ob-cp/>

<https://oris.orientacnisporty.cz/Zavod?id=6814>

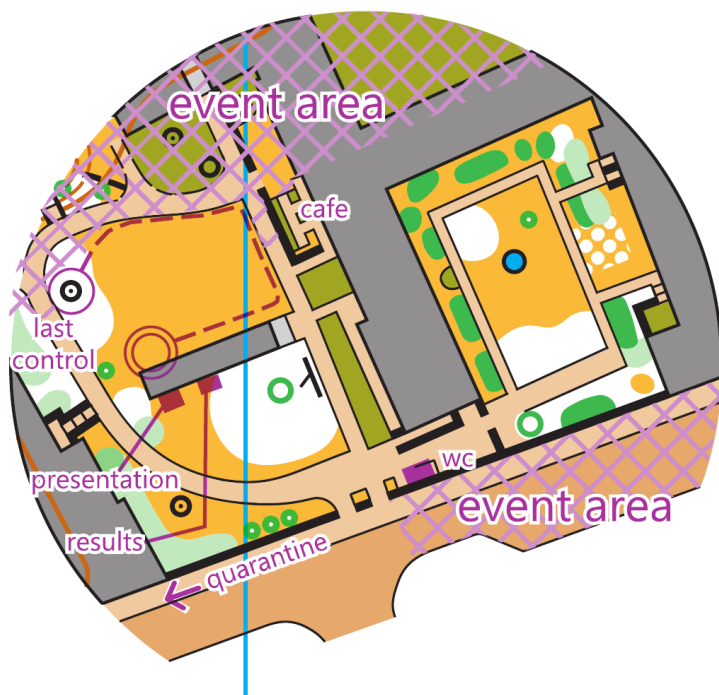
For further information (competition office):

dav.rajnoha@gmail.com

+420 775 696 373

Event center

Brno, Mendlovo Náměstí, ([49.191N. 16.594E](https://www.openstreetmap.org/?lat=49.191&lon=16.594))



Event Date

23. 9. 2023 (Saturday)

Competition type

Individual sprint with an interval start

Classes and participation restrictions

W21E, M21E

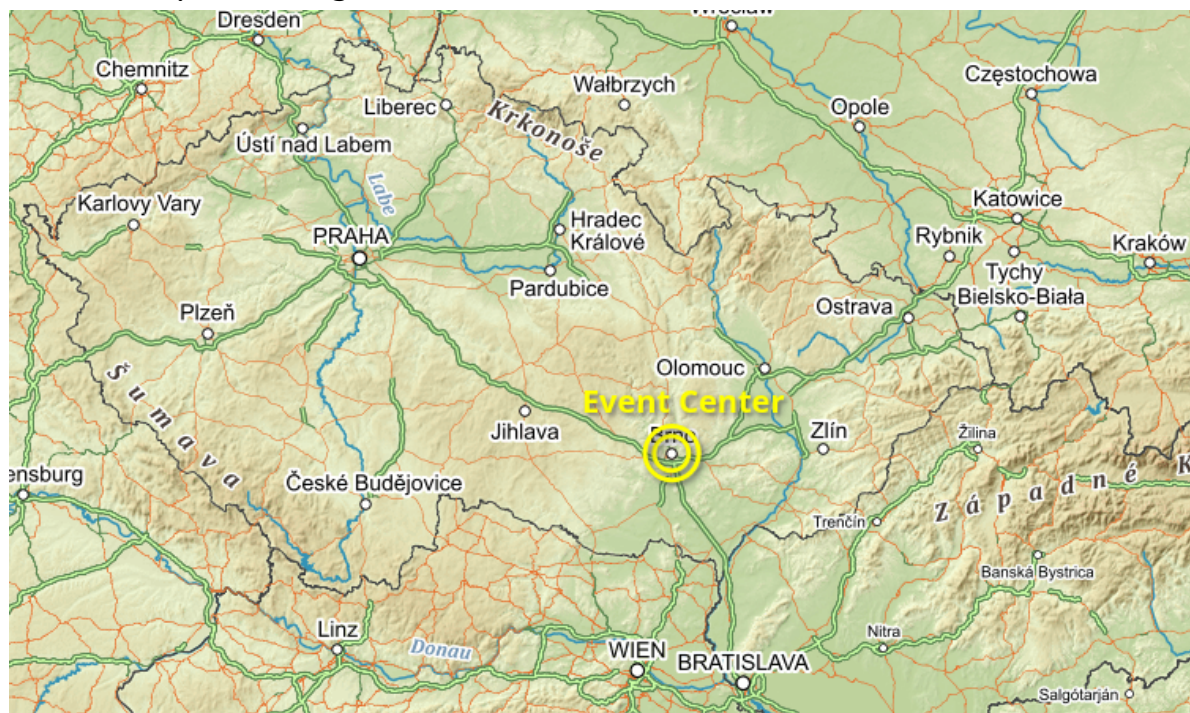
There are no age restrictions. The event is open for all competitors. Women may compete in men's classes.

Visa

See info on the web of the Ministry of Foreign Affairs of the Czech Republic

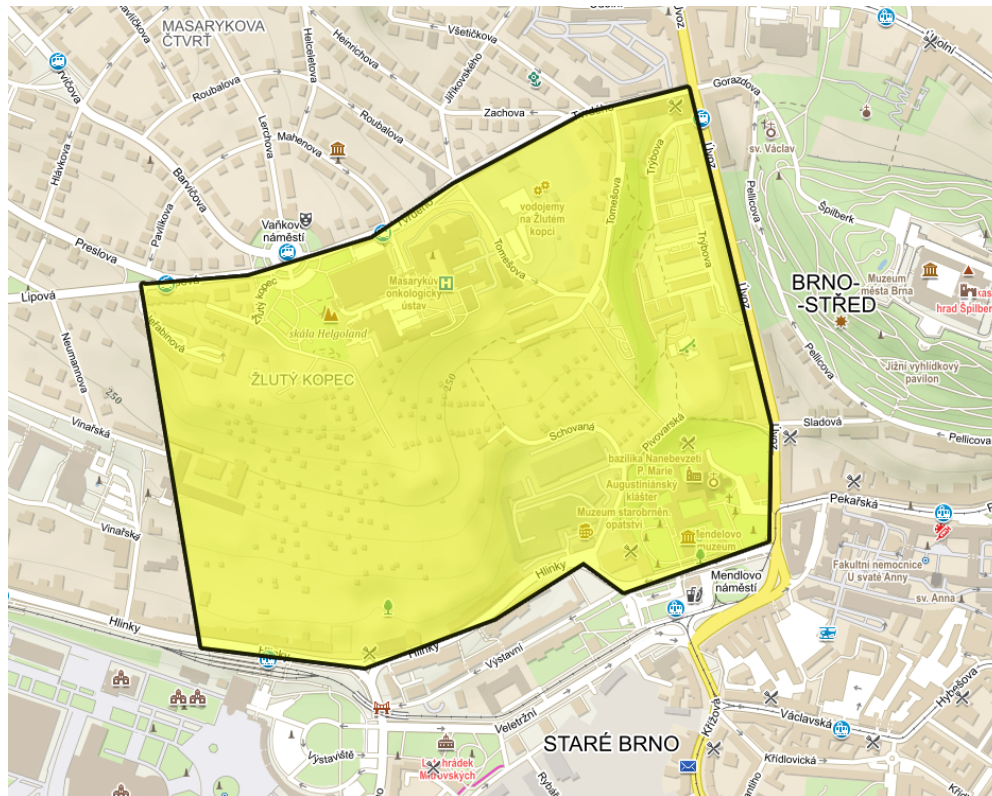
(https://www.mzv.cz/jnp/en/information_for_alien/index.html).

General map of the region



Embargoed areas

Area between streets Hlinky, Mendlovo náměstí, Úvoz, Tvrdého, Vinařská, and Lipová as depicted on the following map.



Accommodation

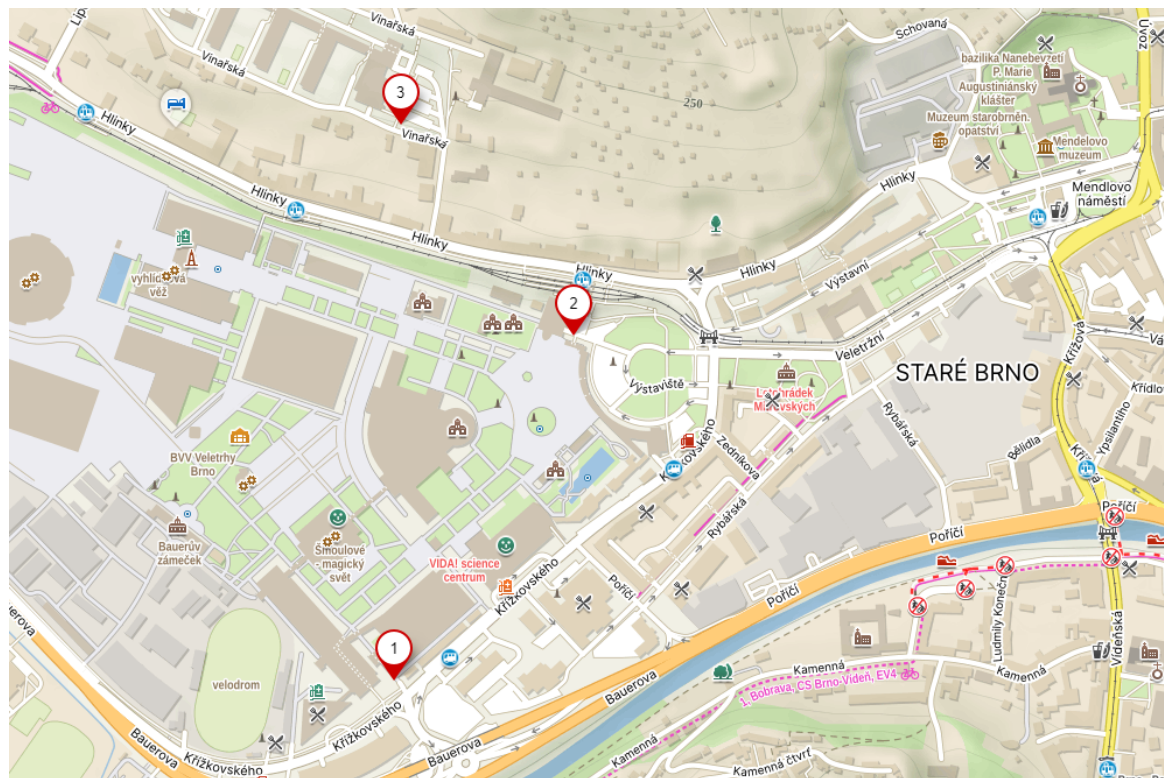
Not provided by the organizer.

Catering

There is a cafe in the event center; for food there are plenty of opportunities in the Brno city center.

Transport and parking

Preferably use Brno's public transport, station Mendlovo náměstí, <https://www.dpmb.cz/en>. Parking of cars is possible at Brno Exhibition Center for 150 Kč, buses for 300 Kč; please enter by Gate 4. It is possible to exit by service entrance and continue straight to the quarantine/start (see the map below).



1 - entrance by Gate 4; 2 - exit by service entrance; 3 - quarantine

Terrain

Very varied terrain containing open parks, narrow streets and passages, areas with large buildings, common urban streets, overgrown gardens, and bushy slopes.

Event program

Registration:	8:00 – 9:00 in the Event center
Quarantine closed:	9:30
Start WRE:	10.50 – 11:50
Prize giving ceremony:	after the relay competition in the afternoon, approximately at 18.00, for details follow the IS ORIS https://oris.orientacnisporty.cz/Zavod?id=6815

Start lists

Available in the IS ORIS

Distances

Parking – Event Centre	1 100 m
Parking – Quarantine	900 m
Event Centre – Quarantine	1 200 m
Event Centre – Start	1 700 m
Quarantine – Start	700 m (elevation 50 m)
Finish – Event Centre	0 m

Quarantine

There will be a quarantine for the WRE classes, which will be closed at 9:30.

All competitors of these classes must pass the checkpoint punching a provided SI unit before entering the quarantine until 9:30. Since the punching of the checkpoint when entering the quarantine until the departure to the starting area, competitors can only stay in the area indicated by the organizer.

The competitors can depart to the starting area no earlier than 10 minutes before their start time, again passing the checkpoint and punching the provided SI unit.

There will be provided transportation of competitors' belongings from the quarantine to the event center.

Course parameters

<i>course</i>	<i>length [km]</i>	<i>climb [m]</i>	<i>number of controls</i>
M21E	3,71	45	17
W21E	3,32	15	17

There will be no refreshment controls.

Control descriptions

Will be available at the start in the second corridor. The size of the control descriptions is 13,5 x 6 cm.

Starting numbers

Will be available at the quarantine. All competitors have to have their starting number attached to their chest.

Punching system

Electronic punching system Sportident will be used. SI units, including the finish unit, will be set to Beacon/Air mode. Each SI card cannot be used multiple times in one race.

Starting procedure

There are going to be 3 corridors. In the first corridor the SI card number will be checked and a SI clearing unit. In the second corridor, there will be a check unit - all competitors must check their SI card - and control descriptions. In the third corridor competitors will stand at the starting line and wait for the starting signal after which they proceed to the map start.

Selected competitors will be asked to use an organizer provided GPS unit. It is the responsibility of the competitor to pick up this unit in the quarantine. The list of competitors will be presented at the IS ORIS, at the event centre and in the quarantine.

Not following this obligation may result in the disqualification.

Shoe restriction

It is forbidden to use shoes with metal spikes.

Restricted areas

Will be marked on the map by ISSprOM 709 Out-of-bounds area symbol.

Artificial bounds marked by ISSprOM 708 Out-of-bounds boundary may be used by the organizer.

Winning time

M21E: 12:45 minutes

W21E: 12:45 minutes

Maps

Žlutý kopec (summer 2023)

ISSproM 2019-2; Scale: 1:4 000; E: 2,5 m

Laser print technology, maps will be wrapped in a waterproof foil.

Maps will not be collected in the finish since there is a quarantine.

Results

Live results will be available at <https://oresults.eu/events/474>.

The time measurement accuracy is to the whole second. Final results will be published in the IS ORIS (<https://oris.orientacnisporty.cz/Zavod?id=6814>).

Complaints and protests

Complaints can be lodged about violations of these rules or any directions given by the organiser. Only team officials or competitors have the right to file a complaint. All complaints must be submitted in writing to the organiser as soon as possible, but no later than 30 minutes after the finish of the last competitor. The organiser will then make a decision regarding the issue, and the individual filing the complaint should be informed of this decision without delay. If, for any reason, the organiser is unable to decide, the IOF Event Adviser will step in to make the decision. There's no charge associated with filing a complaint.

If an individual is not satisfied with the organiser's decision regarding a complaint, they have the right to protest that decision. As with complaints, only team officials or competitors can lodge a protest. All protests must be written and handed to the organiser within 15 minutes from the time the complainant was informed of the decision about their complaint. Protests submitted after this period might still be reviewed, but it's at the jury's discretion and relies on the existence of significant exceptional reasons, which should be detailed in the protest. Importantly, there's no charge associated with submitting a protest.

Maximum running time

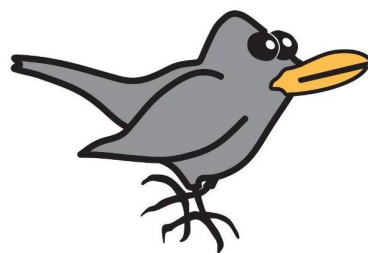
45 minutes for all categories.

Jury

Daniel Wolf (CZE)

Roman Zbranek (CZE)

Lukáš Hovorka (CZE)



Partners of Czech Orienteering Federation



ČESKÁ
ERGONOMICKÁ
SPOLEČNOST



T-MAPY



Grant Thornton



ČSOB Pojišťovna



TRIMTEX
TRIMTEX
— Custom sportswear —



➔ Svět běhu